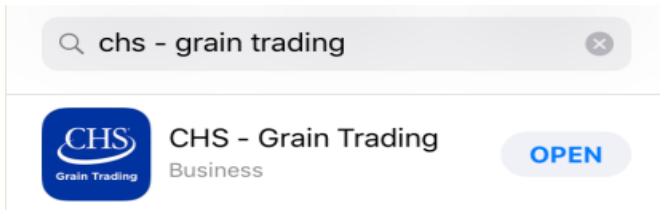


CHS Offer Management App Initial Login Guide

For iOS and Android

1. Be sure the correct app is downloaded from the App store; search for CHS – Grain Trading.




2. Open the app and select Producer/Customer and tap Request Account if you do not already have an account.



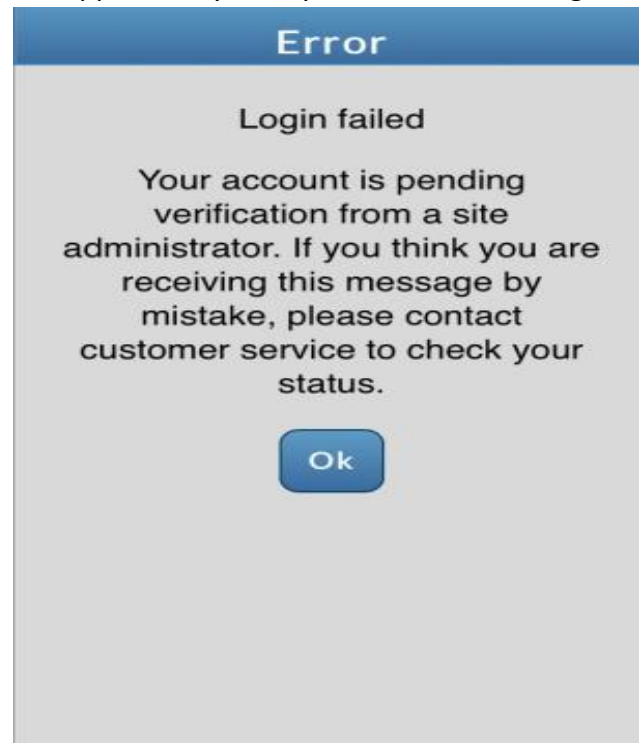
3. Select the CHS site(s) that you wish to have an account for and click Next.



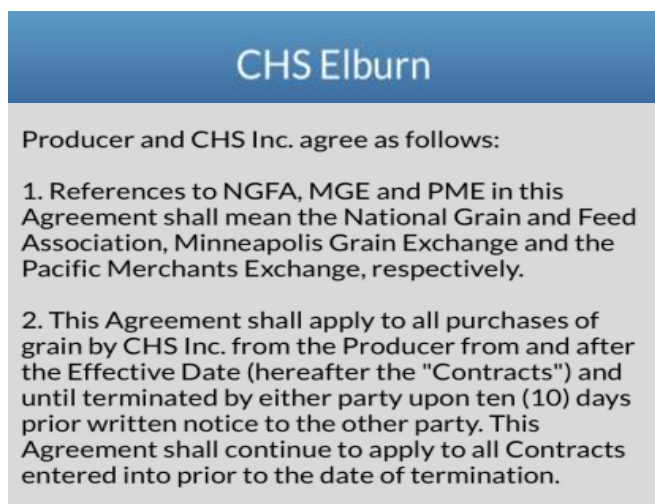
4. Create your Username and Password, provide your contact information, tap Yes and tap Submit.

A screenshot of the CHS Grain Trading app registration form. The title is "CHS Grain Trading". Below the title, it says "Please provide your contact information." and "Required *". The form contains four input fields: "Username", "Password *" (with a "SHOW" link), "First Name *", and "Last Name *".

5. You may receive an Error if you attempt to login prior to being approved by CHS. One you are approved by CHS, you will be able to login.



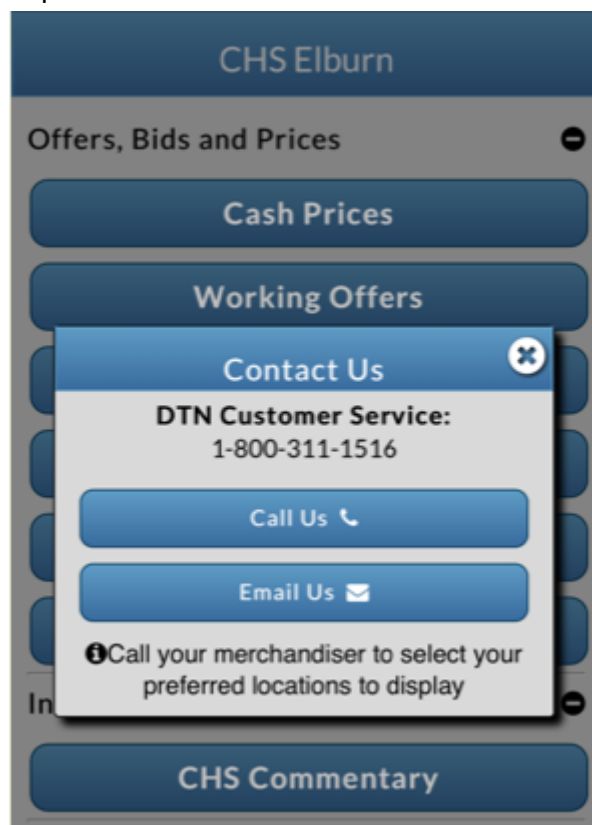
6. One you have been approved by CHS, read the terms and conditions and tap I Agree.



7. You are now ready to begin using the CHS Grain Trading app.



8. Tap the HELP button for further assistance.



9. View your app at least once every three days to eliminate having to login again.

10. DTN Customer Service can be reached by phone at 1-800-311-1516 or by email at portalsupport@dtm.com

DTN Portal Customer Service contact information:

Phone: 1-800-311-1516 Email: portalsupport@dtm.com